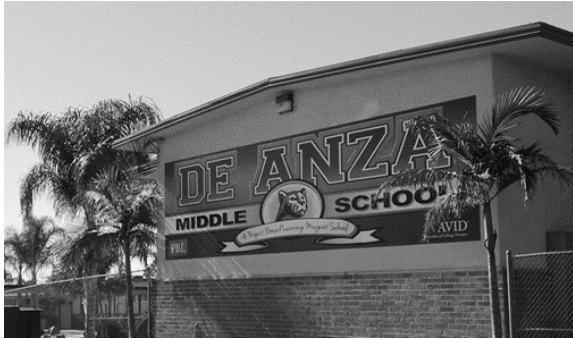


SCHOOLS TO WATCH-TAKING CENTER STAGE

Schools to Watch™-Taking Center Stage is a statewide program implemented by the California League of Middle Schools, California Department of Education, California Middle Grades Alliance, National Forum to Accelerate Middle-Grades Reform and the Schools to Watch™-Taking Center Stage Model Schools

For more information, visit www.clms.net/stw.



DE ANZA MIDDLE SCHOOL

Designated 2015, Re-Designated 2018

Ontario-Montclair Unified School District

San Bernardino County

Adriana Gonzales, Principal

1450 S. Sultana Avenue, Ontario, CA 91761

Tel (909) 986-8577

Adriana.gonzales@aadusd.k12.ca.us

SCHOOL CHARACTERISTICS

Community: Urban Fringe. Enrollment: 580. Grade Levels: 7-8. Schedule: Six-period day with an optional zero period. Block schedule in content areas.

STUDENT DEMOGRAPHICS

Free/Reduced Lunch: 100%; English Learners: 33%.

REPLICABLE PRACTICES

- Long-term projects are interdisciplinary and include a presentation component
- Flexible block schedule days provide extended periods for activity-based lessons
- Staff development includes learning walks, training in BIE project-based learning, teaching channel teams and an on-site instructional coach
- At-risk students: AVID, Think Together, embedded intervention, reading support class
- Wrap-around services include counseling, medical services and financial support
- Every classroom focuses on collaborative grouping and structured discussion through productive partnering and cooperative learning
- Students engage in self-analysis activities that culminate with student-led conferences
- Extra-curricular program includes: band, marching band, drill team, dance classes, tutoring, college visits, “hang time” and after-school sports
- Fluid interventions are offered within and outside the school day
- Electives and interventions are supported by the zero period
- Parent involvement avenues include site councils, invitations to watch student presentations, student-led conferences, digital communications, parent support center
- High expectations supported by an RtI discipline model and proactive interventions with counselors, administrators and a student mentor
- Professional and classified staff benefit from ongoing professional development
- District supports vertical articulation focused on student needs
- University of La Verne invites students to visit college campus yearly
- Guaranteed college admission for all students who continue on in Chaffey Union HSD